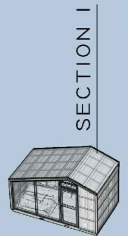
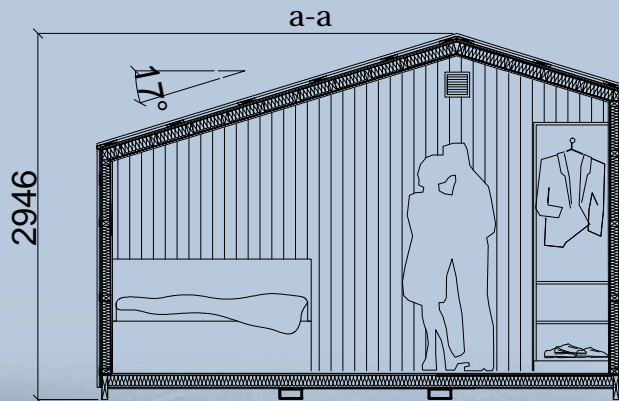
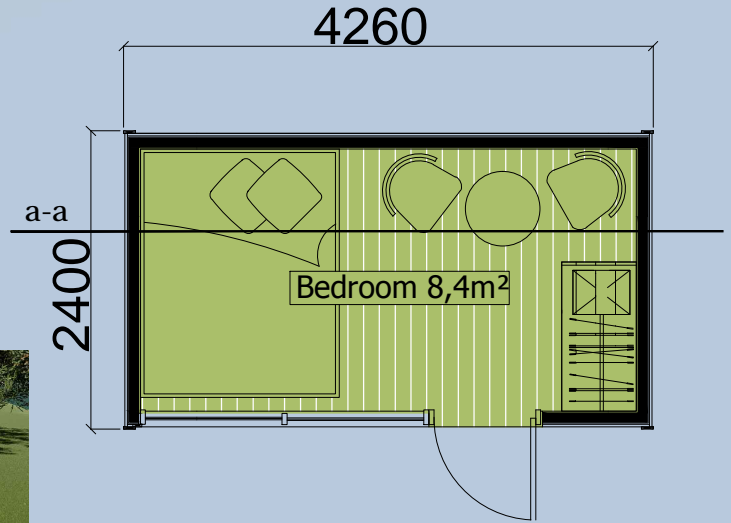
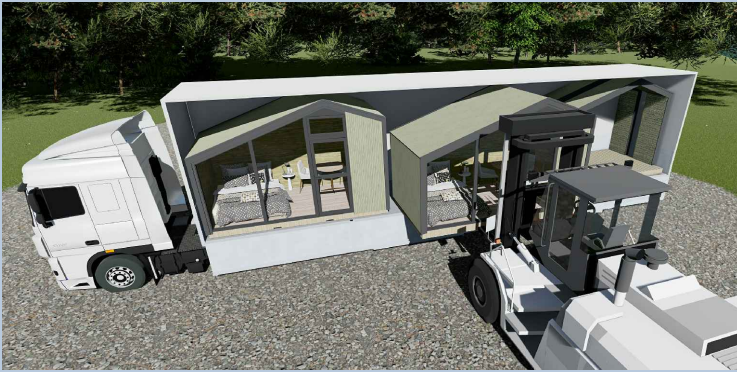


8m²

Features :

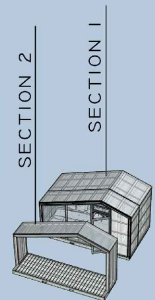
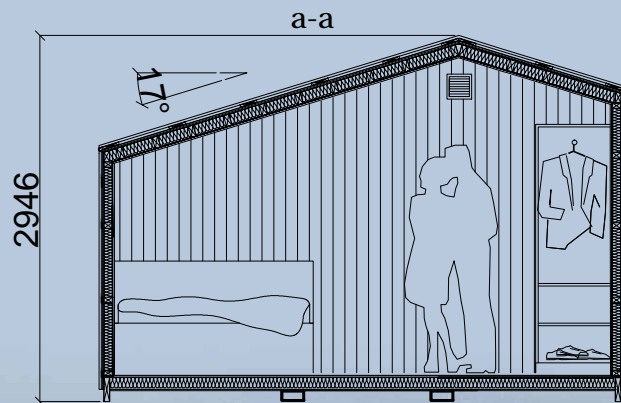
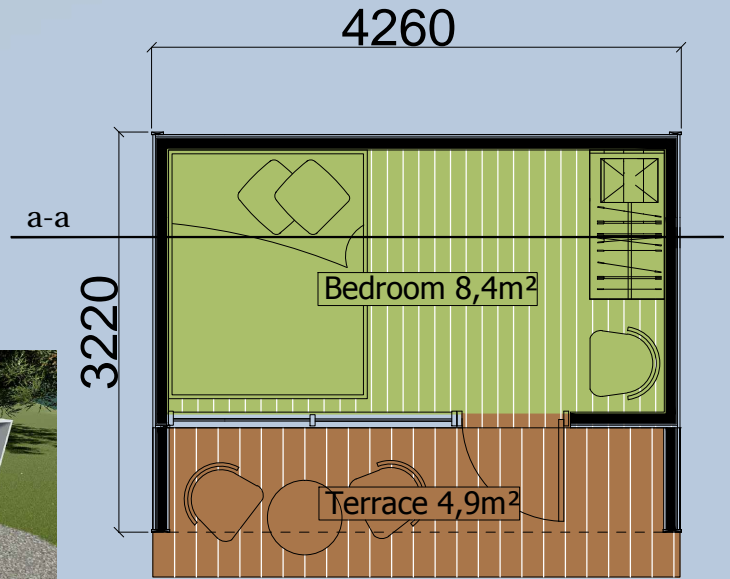
- ✓ 1 double bed (2 people);
- ✓ Is assembled from one modules;
- ✓ Simple foundation;
- ✓ Easy to transport.



8m²

Features :

- ✓ 1 double bed (2 people);
- ✓ Is assembled from two modules;
- ✓ Simple foundation;
- ✓ Easy to transport.



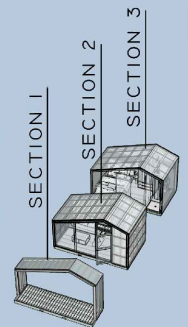
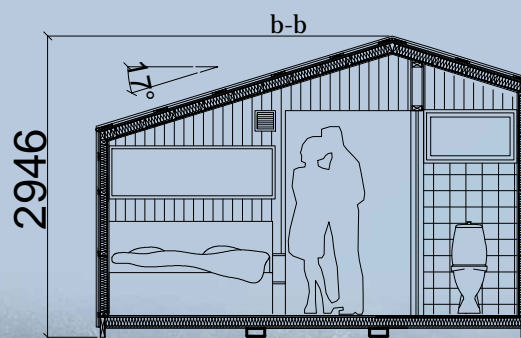
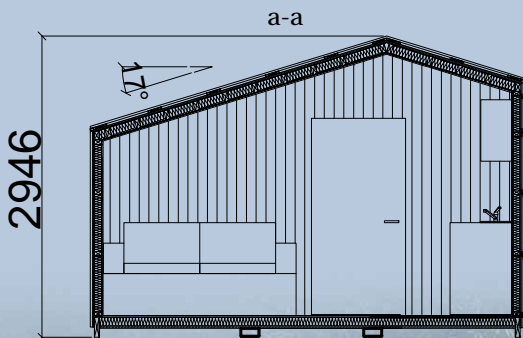
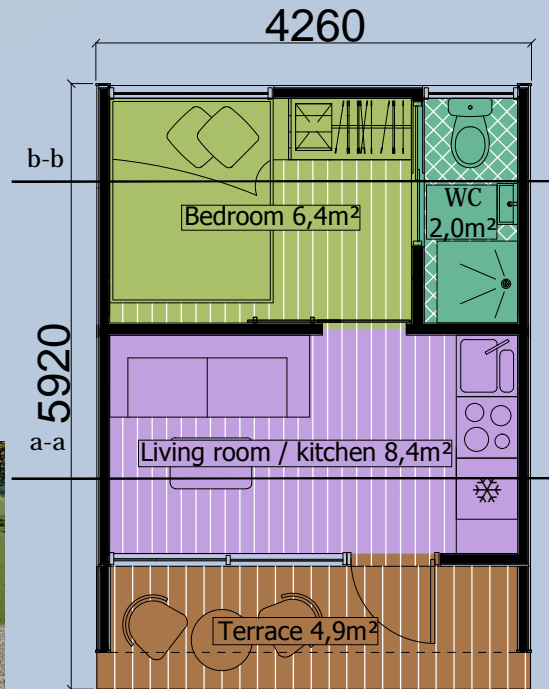
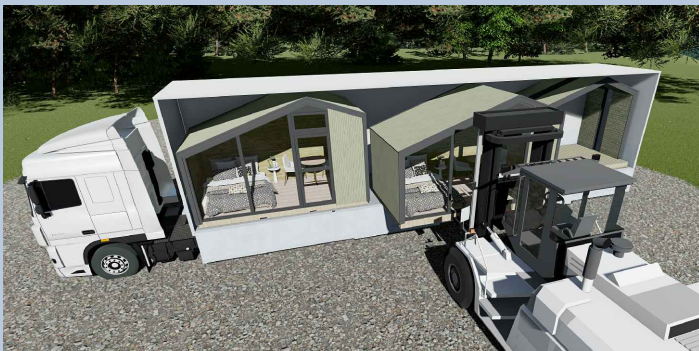
M16

<http://www.panneauxmaisonossaturebois.com>
tomre@skynet.be

16,8m²

Features :

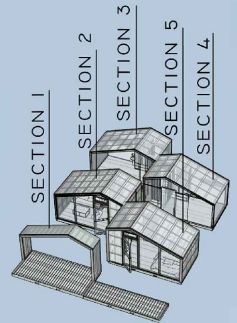
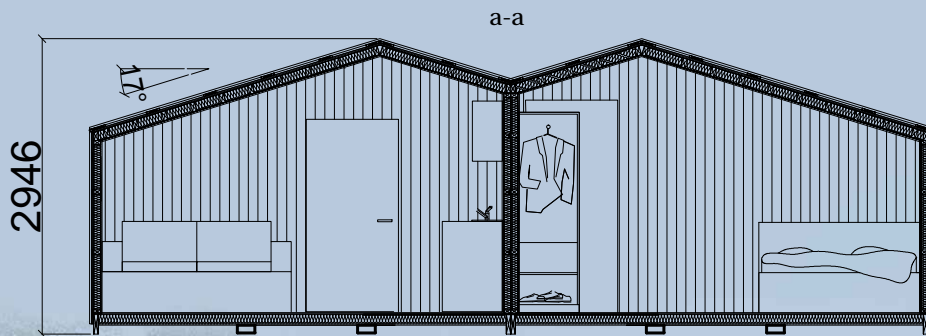
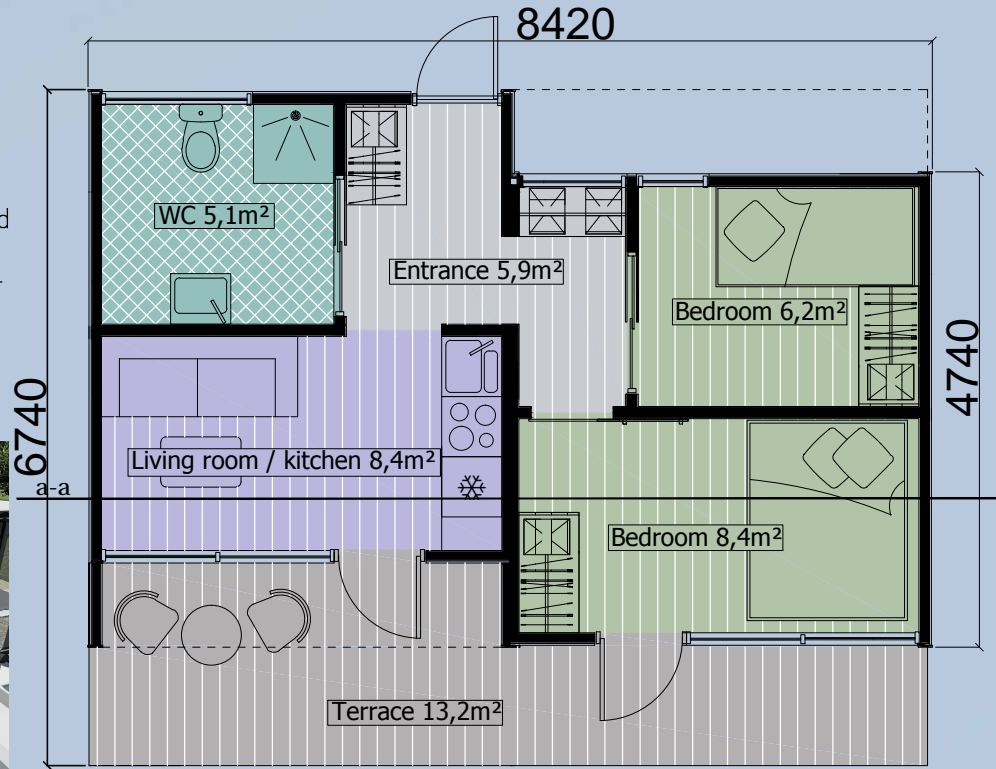
- ✓ 1 double bed and 1 sofa bed (3-4 people);
- ✓ Is assembled from three modules;
- ✓ Simple foundation;
- ✓ Easy to transport.



34m²

Features :

- ✓ 1 double bed 1 bunk bed (4 people);
- ✓ Is assembled from four modules;
- ✓ Wide terrace 13,2m²;
- ✓ Simple foundation;
- ✓ Easy to transport.



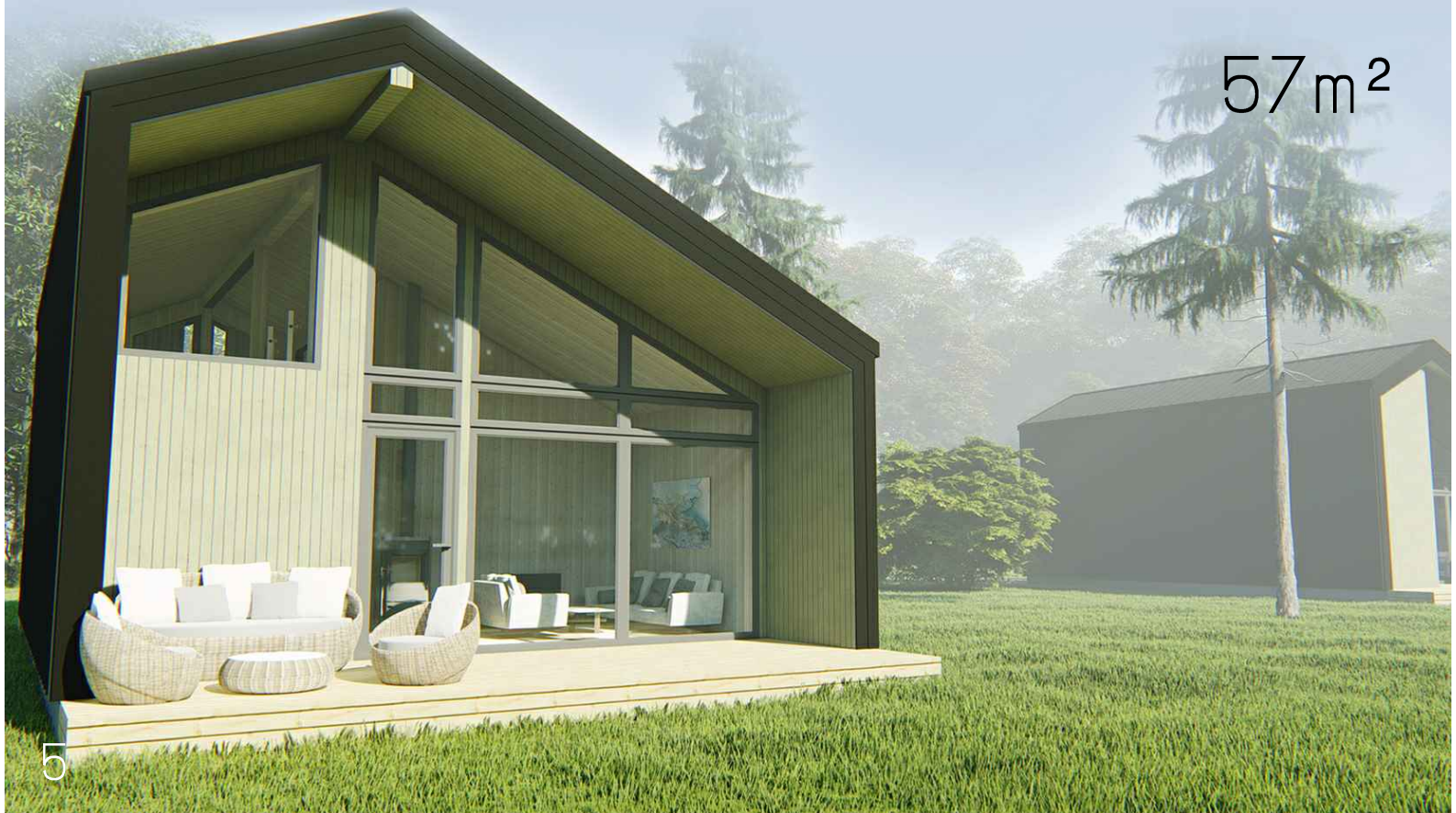
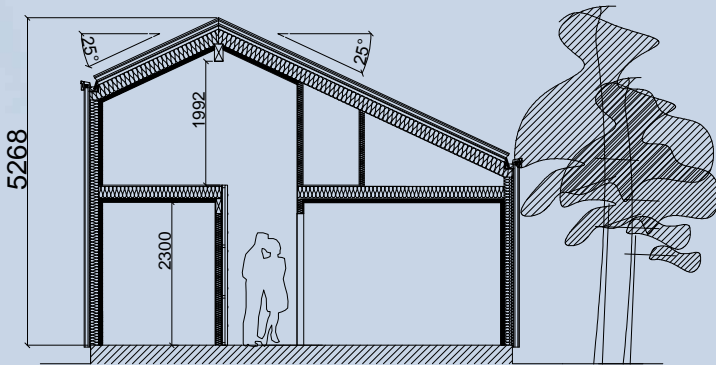
M50-1

<http://www.panneauxmaisonossaturebois.com>
tomre@skynet.be

$$40\text{m}^2 + 17\text{m}^2 (\text{loft}) = 57\text{m}^2$$

Features :

- ✓ 2 double beds, 1 single bed and 1 bunk bed (7 people);
- ✓ Possibility to make multiple cottages;
- ✓ NTA = 40 m² (1st floor);
- ✓ NTA = 17 m²;
- ✓ BRA = 52 m²;
- ✓ BYA = 60 m².



M50-2

<http://www.panneauxmaisonossaturebois.com>
tomre@skynet.be

Panneaux
Maison

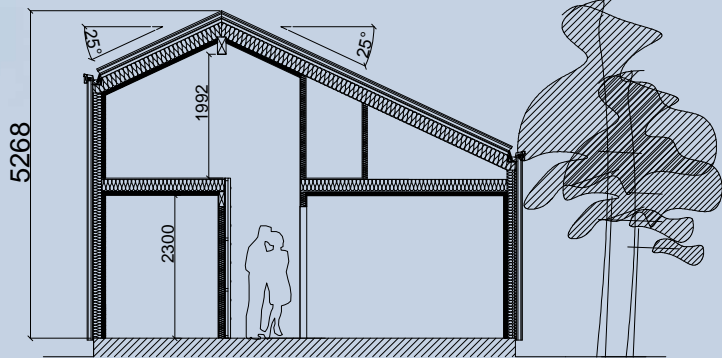


Ossature
Bois

$$40\text{m}^2 + 17\text{m}^2 (\text{loft}) = 57\text{m}^2$$

Features :

- ✓ 2 double beds, 1 single bed and 1 bunk bed (7 people);
- ✓ Possibility to make multiple cottages;
- ✓ NTA = 40 m² (1st floor);
- ✓ NTA = 17 m²;
- ✓ BRA = 52 m²;
- ✓ BYA = 60 m².



57m²



M70-1

<http://www.panneauxmaisonossaturebois.com>
tomre@skynet.be

Panneaux
Maison

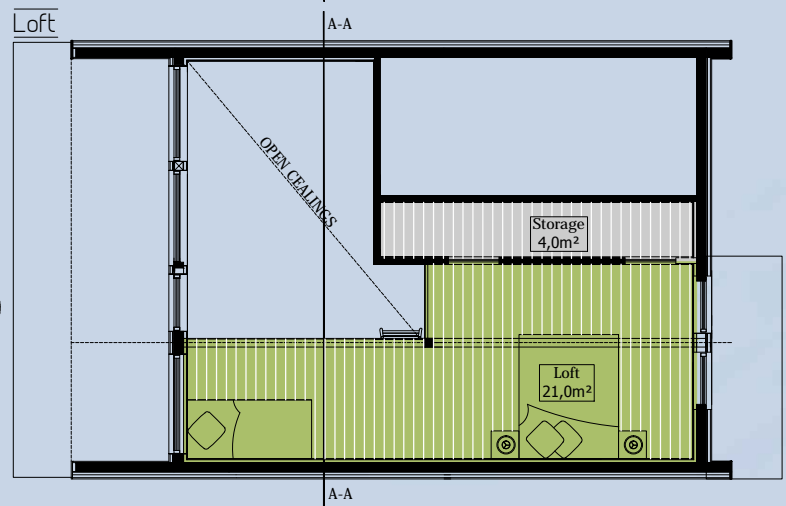
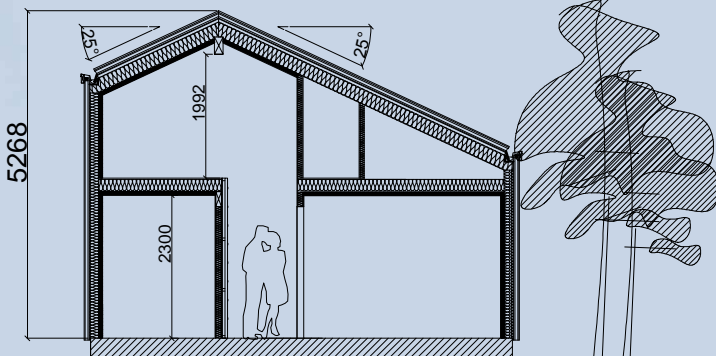
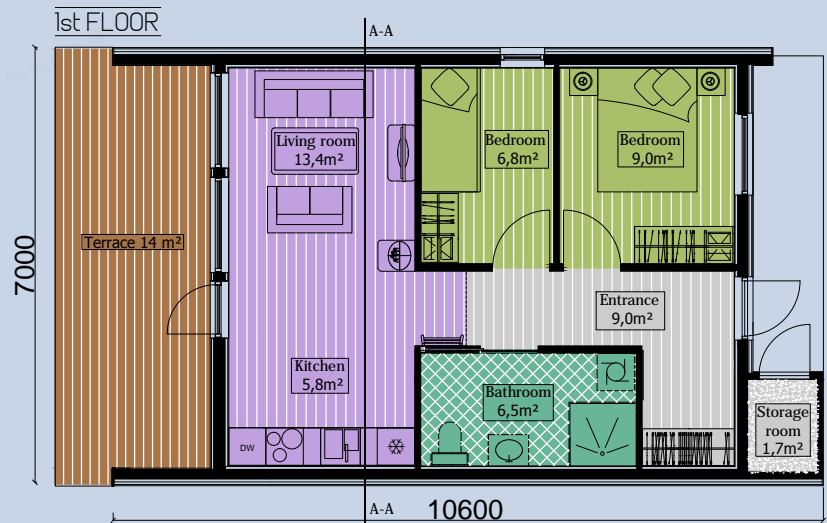


Ossature
Bois

$50\text{m}^2 + 25\text{m}^2(\text{loft}) = 75\text{m}^2$

Features :

- ✓ 2 double beds, 1 single bed and 1 bunk bed (7 people);
- ✓ Possibility to make multiple cottages;
- ✓ NTA = $52,5\text{m}^2$ (1st floor);
- ✓ NTA = $17,6\text{m}^2$;
- ✓ BRA = 70m^2 ;
- ✓ BYA = $74,3\text{m}^2$.



M70-2

<http://www.panneauxmaisonossaturebois.com>
tomre@skynet.be

Panneaux
Maison

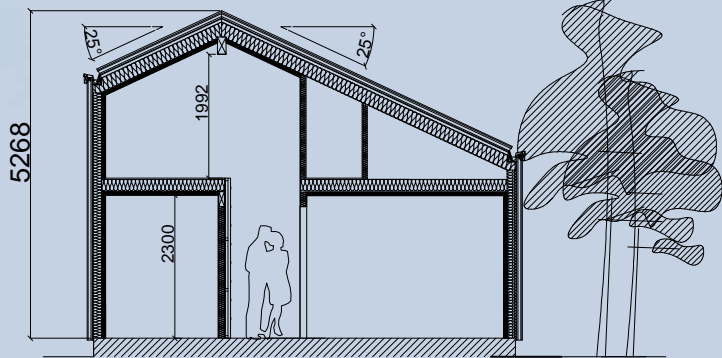


Ossature
Bois

$$50\text{m}^2 + 25\text{m}^2(\text{loft}) = 75\text{m}^2$$

Features :

- ✓ 2 double beds, 1 single bed and 1 bunk bed (7 people);
- ✓ Possibility to make multiple cottages;
- ✓ NTA = 52,5 m² (1st floor);
- ✓ NTA = 17,6 m²;
- ✓ BRA = 70 m²;
- ✓ BYA = 74.3 m².



75m²



M80s

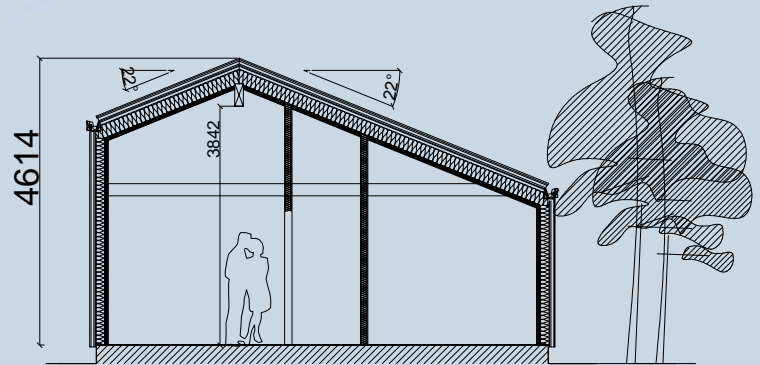
<http://www.panneauxmaisonossaturebois.com>
tomre@skynet.be



80m²

Features :

- ✓2 double beds (4 people);
- ✓Possibility to make multiple cottages;
- ✓Side entrance;
- ✓Single floor;
- ✓NTA = 80 m²;
- ✓BRA = 83 m²;
- ✓BYA =109 m².



80m²

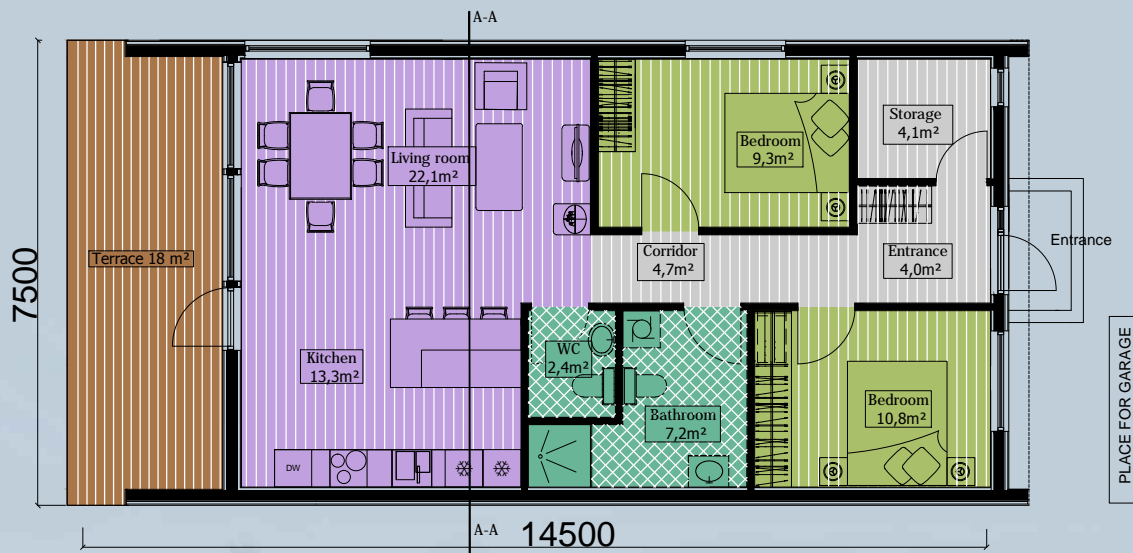
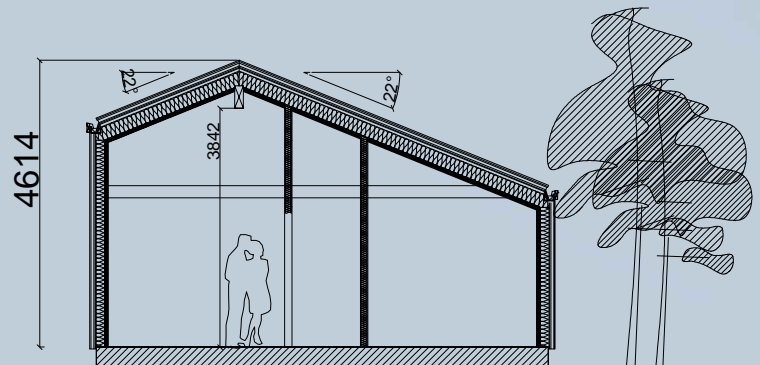




80m²

Features :

- ✓ 2 double beds (4 people);
- ✓ Possibility to make multiple cottages;
- ✓ Side entrance;
- ✓ Single floor;
- ✓ NTA = 80 m²;
- ✓ BRA = 83 m²;
- ✓ BYA = 109 m².



80m²



M120s

<http://www.panneauxmaisonossaturebois.com>
tomre@skynet.be



125m²

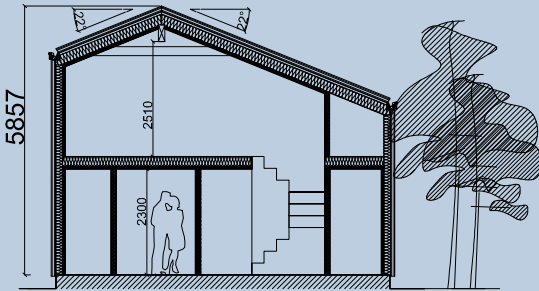
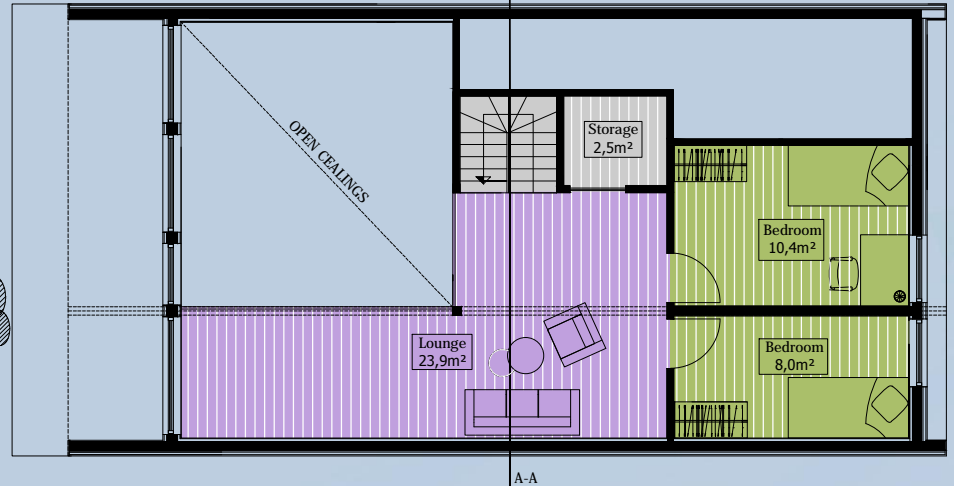
Features :

- ✓ 2 double beds, 2 single beds
- ✓ or bunk beds (6-8 people)
- ✓ Possibility to make cottages;
- ✓ Side entrance;
- ✓ NTA = 79,5 m² (1st floor);
- ✓ NTA = 35,5 m² (2nd floor);
- ✓ BRA = 120 m²;
- ✓ BYA = 109 m².

1st FLOOR



Loft



125m²



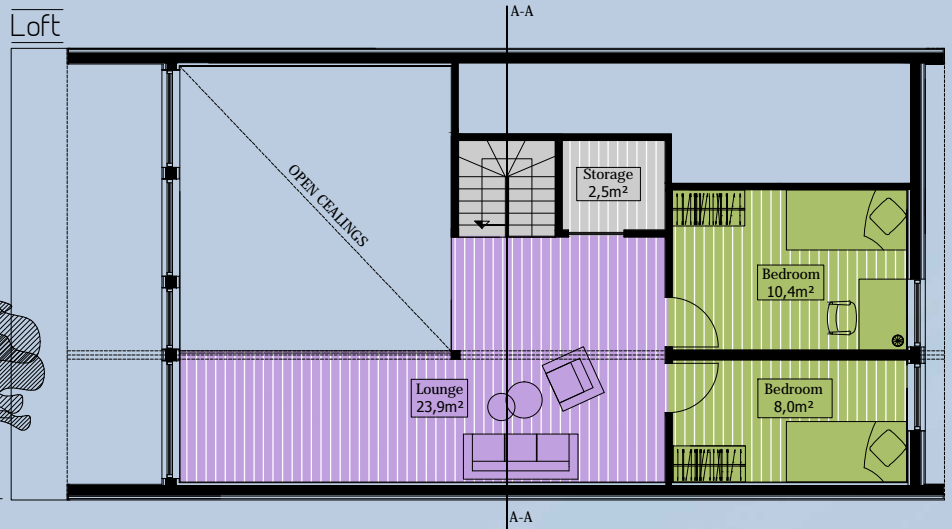
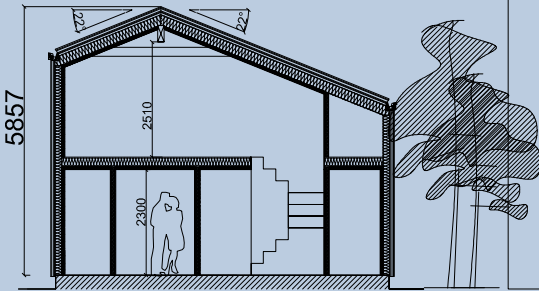
M120f

<http://www.panneauxmaisonossaturebois.com>
tomre@skynet.be

125m²

Features :

- ✓ 2 double beds, 2 single beds or bunk beds (6-8 people)
- ✓ Possibility to make cottages;
- ✓ Side entrance;
- ✓ NTA = 79,5 m² (1st floor);
- ✓ NTA = 35,5 m² (2nd floor);
- ✓ BRA = 120 m²;
- ✓ BYA = 109 m².



125m²

